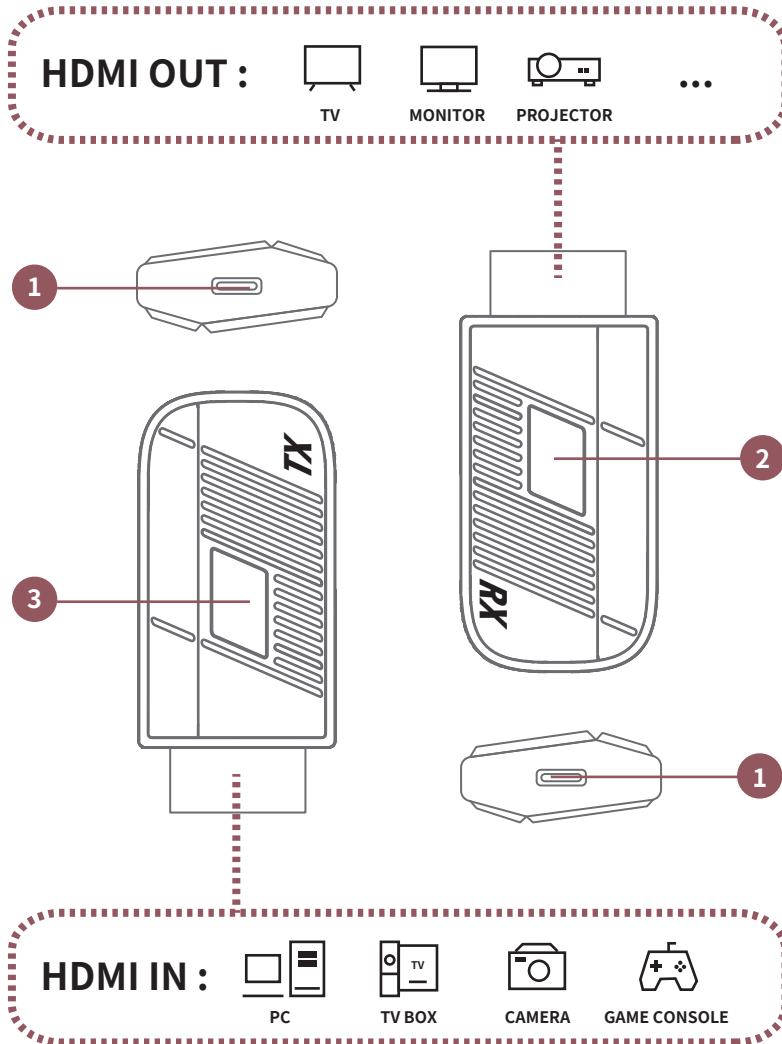


# QUICK GUIDE

Tyche Wireless Display Adapter

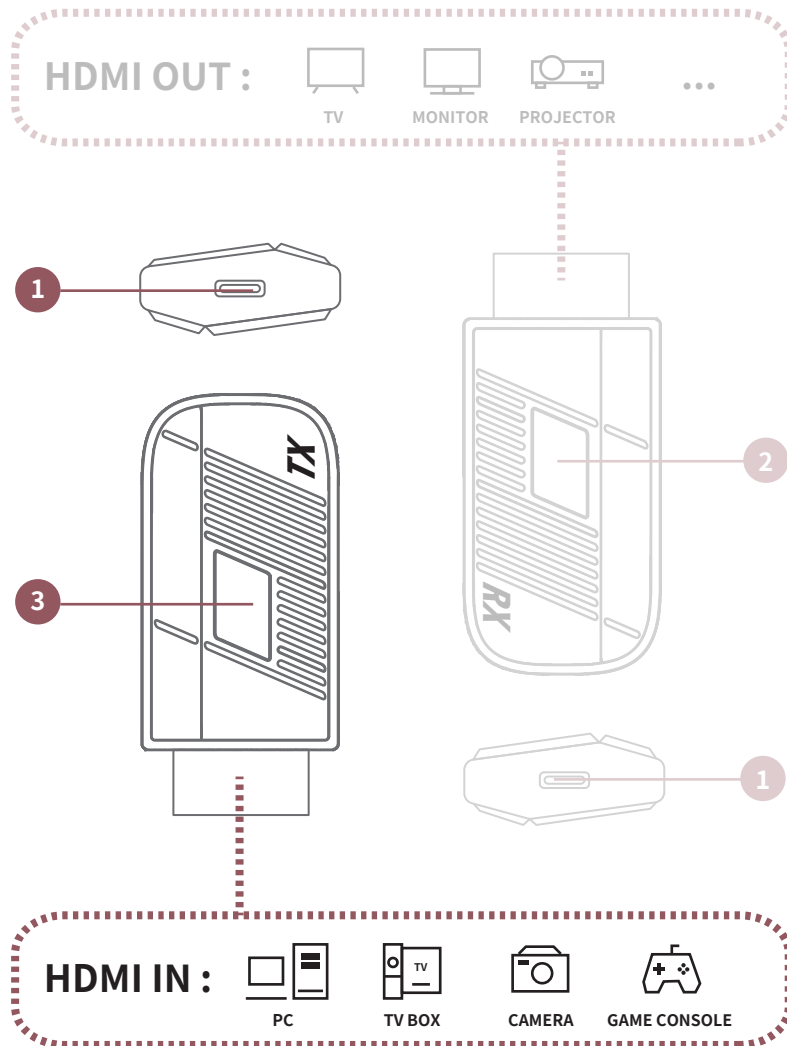
**Model : WDV1H10802**

# Introduction



- 1 **USB-C Connector (for Power Supply)**
- 2 **Function Button** **RX**  
Long Press : Pair
- 3 **Function Button** **TX**  
Long Press : Pair  
Short Press : Trun On / Off Transmission

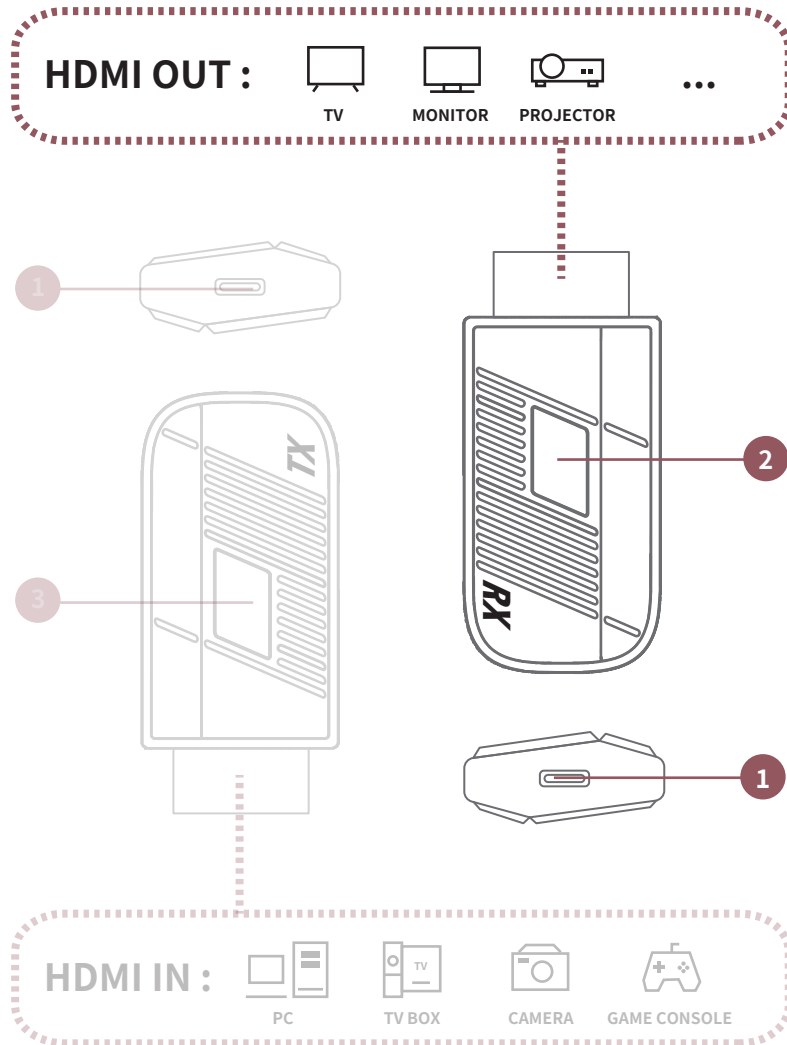
## Connecting to the devices - TX



**Plug the Transmitter - "TX" to the device such as laptops, desktops and plug the USB-C port on the end of the TX with power supply (Use the USB-C cable to connect TX with USB-C port from the device or external charger\*)**

**\*Suggest to use 5V Charger instead of high output charger**

## Connecting to the devices - RX

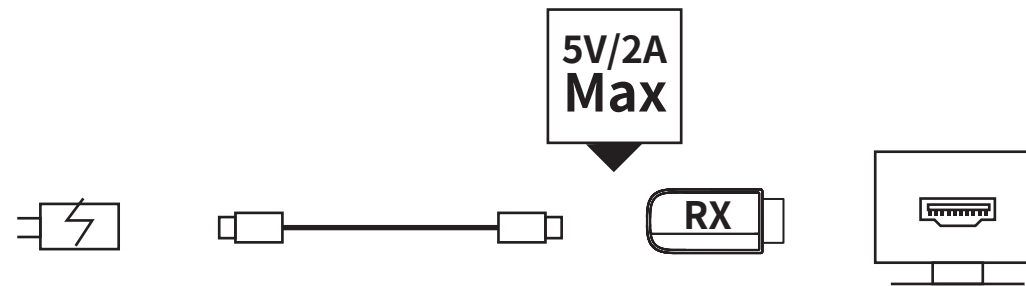


**Plug the receiver - “RX” to the external display device such as TVs, external monitors, projectors**

**Plug the USB-C port on the end of the RX with power supply  
(Use the USB-C cable to connect RX with USB-C port from the device or external charger\*)**

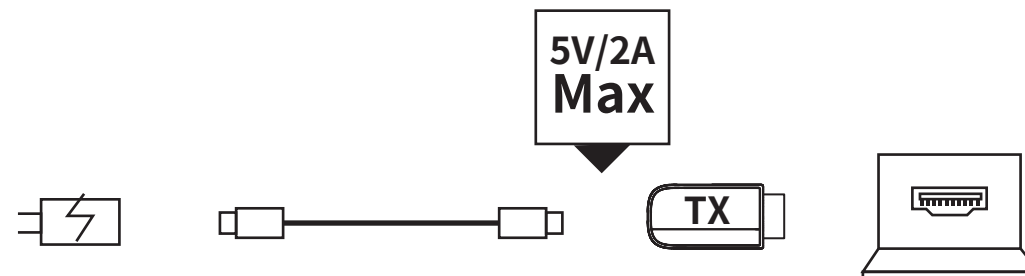
*\*Suggest to use 5V Charger instead of high output charger*

## Connection Diagram



### STEP 1

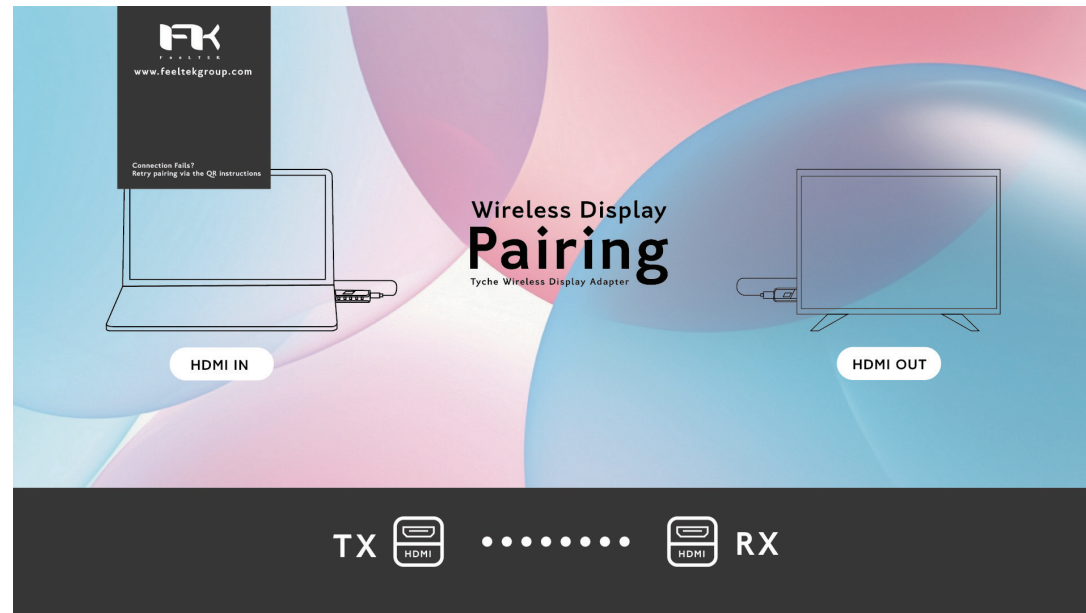
Connect the **Receiver(RX)** to the HDMI port of **the output device**(such as a TV, monitor or projector).  
Ensure the power supply is provided.



### STEP 2

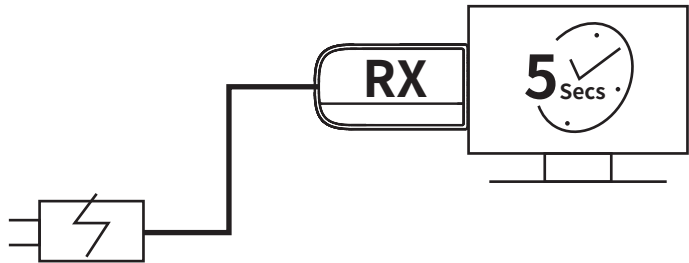
Connect the **Transmitter(TX)** to the HDMI port of **the source device**(such as a computer, gaming console or camera).  
Ensure the power supply is provided.

## Pairing



**Wait for the device and monitor to detect, while detected the external device will show the pairing screen. TX and RX will automatically pair and once they are successfully paired, the external device will go into the display mode of your connected device**

## Pairing Instruction

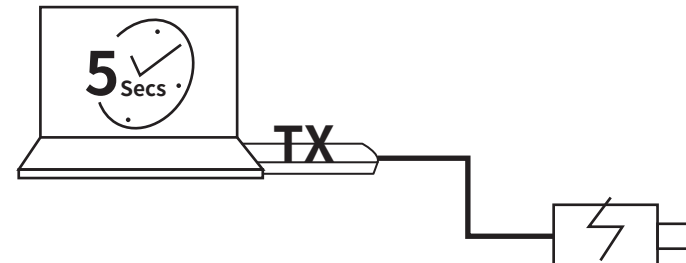


1

**Keep pressing the function button on the Receiver(RX) for more than 5 seconds until the display enters Pairing Mode page.**

If pairing successfully, the screen will return to the home page and wait a few seconds to enter Mirror / Extend mode.

If auto-pair is not functioning, please manually set the connection by below steps.



2

**Keep pressing the function button on the Transmitter(TX) for more than 5 seconds until the flashing indicator light turns steady.**